

User Code authentication is an authentication method for limiting access to functions according to a *user code*. The same *user code* can be used by more than one *user*.

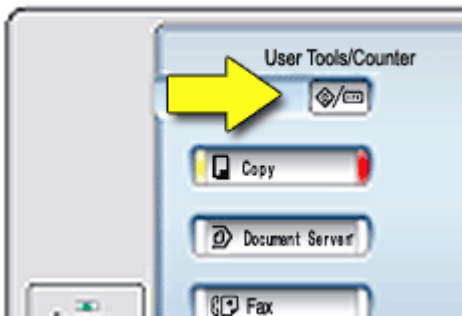
This can be specified by the machine administrator.

To specify *User Code* authentication, follow these steps.

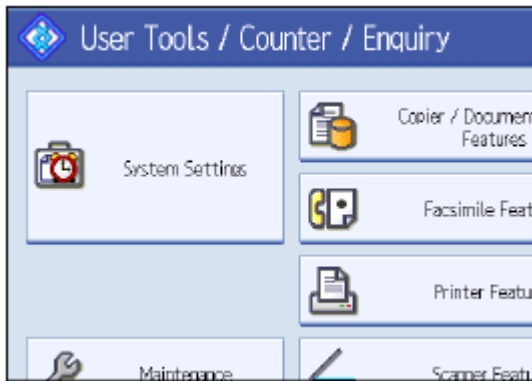
Important

- To control the use of DeskTopBinder for the delivery of files stored in the device, select Basic Authentication, Windows Authentication, LDAP Authentication, or Integration Server Authentication.

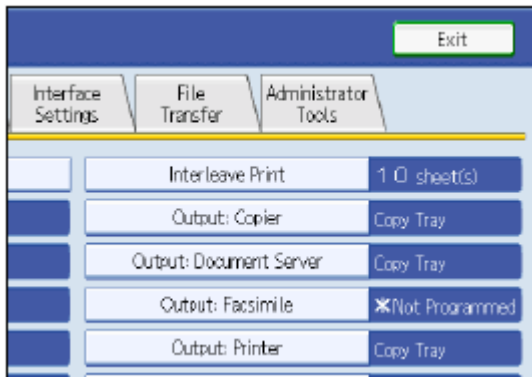
1. Press the [*User Tools/Counter*] key.



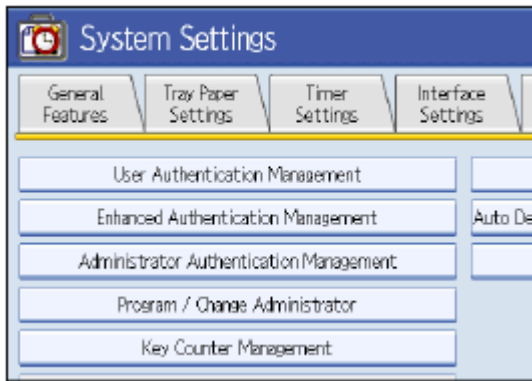
2. Press [**System Settings**].



3. Press [**Administrator Tools**].

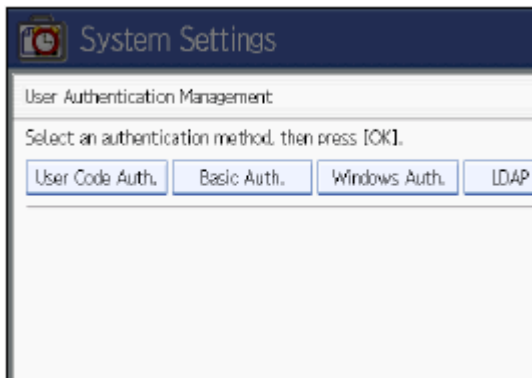


4. Press [*User Authentication Management*].



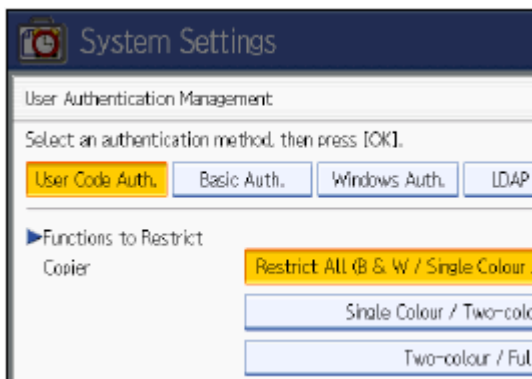
5. Select [**User Code Auth.**].

If you do not want to use *user* authentication management, select [**Off**].



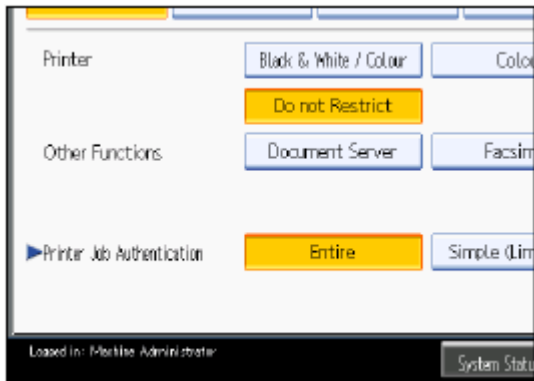
6. Select which of the functions of the device you want to limit.

The selected settings will be unavailable to *users*.



7. Select the "Printer Job Authentication" level.

- If you select [**Entire**] or [**Simple (All)**], proceed to "[Selecting Entire or Simple \(All\)](#)".
- If you select [**Simple (Limitation)**], proceed to "[Selecting Simple \(Limitation\)](#)".



[↑ To Top](#)

Selecting Entire or Simple (All)

If you select **[Entire]**, you cannot print using a printer driver or a device that does not support authentication.

To print under an environment that does not support authentication, select **[Simple (All)]** or **[Simple (Limitation)]**.

If you select **[Simple (All)]**, you can print even with unauthenticated printer drivers or devices. Specify this setting if you want to print with a printer driver or device that cannot be identified by the device or if you do not require authentication for printing. However, note that, because the device does not require authentication in this case, it may be used by unauthorized *users*.

1. Press **[OK]**.
2. Press **[Exit]**.
3. Press the **[User Tools/Counter]** key.

[↑ To Top](#)

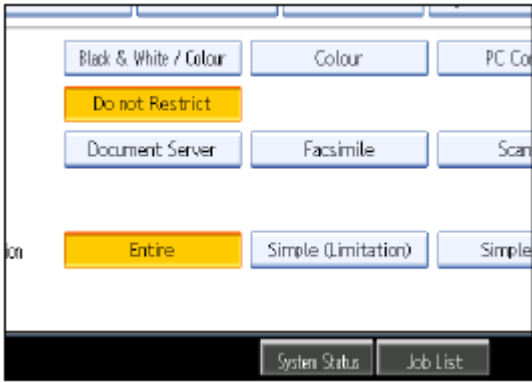
Selecting Simple (Limitation)

If you select **[Simple (Limitation)]**, you can specify clients for which printer job authentication is not required.

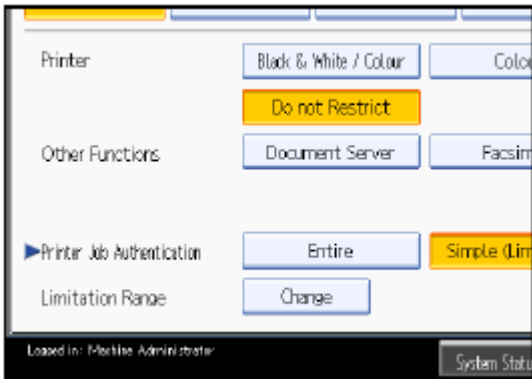
Specify **[Parallel Interface: Simple]**, **[USB: Simple]** and the IPv4 address range of clients in which printer job authentication is not required. Specify this setting if you want to print using unauthenticated printer drivers or without any printer driver. Authentication is required for printing with non-specified devices.

If you select **[Simple (Limitation)]**, you can print even with unauthenticated printer drivers or devices. Specify this setting if you want to print with a printer driver or device that cannot be identified by the device or if you do not require authentication for printing. However, note that, because the device does not require authentication in this case, it may be used by unauthorized *users*.

1. Press **[Simple (Limitation)]**.



2. Press **[Change]**.



3. Specify the range in which **[Simple (Limitation)]** is applied to "Printer Job Authentication".
 You can specify the IPv4 address range to which this setting is applied, and whether or not to apply the setting to the parallel and USB interfaces.



4. Press **[Exit]**.

5. Press **[OK]**.

6. Press **[Exit]**.

7. Press the **[User Tools/Counter]** key.