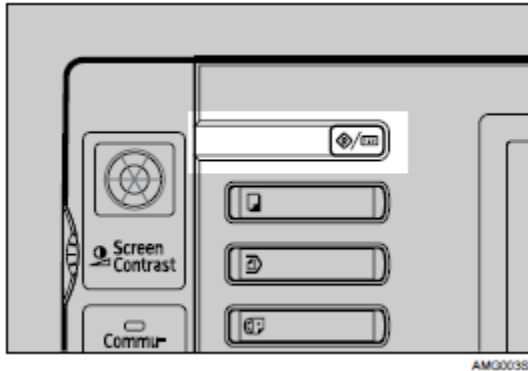
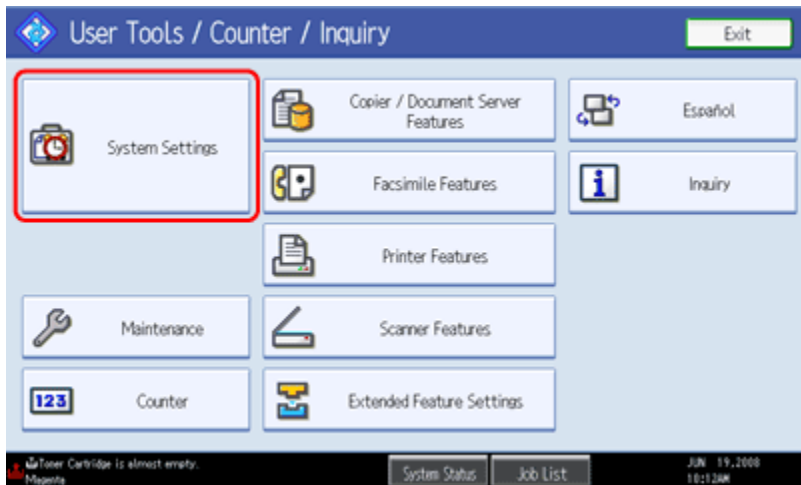


Setting up Scan to E-mail

1. On the operation panel, press the **[User Tools/Counter/Inquiry]** key.



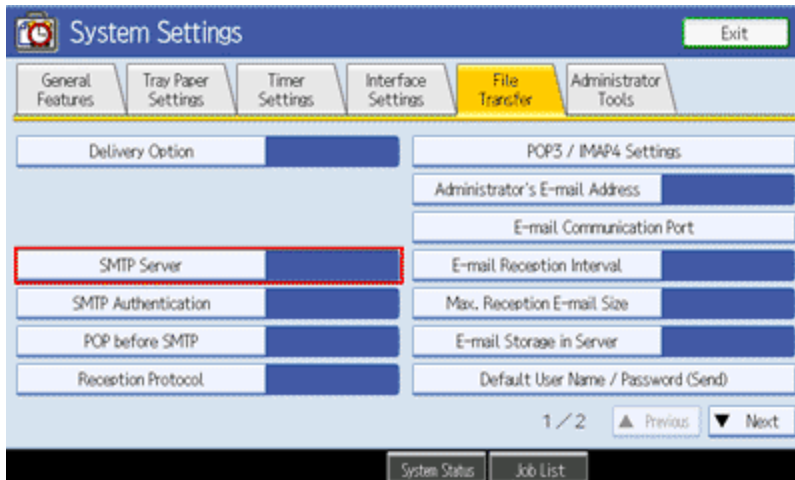
2. Press **[System Settings]**.



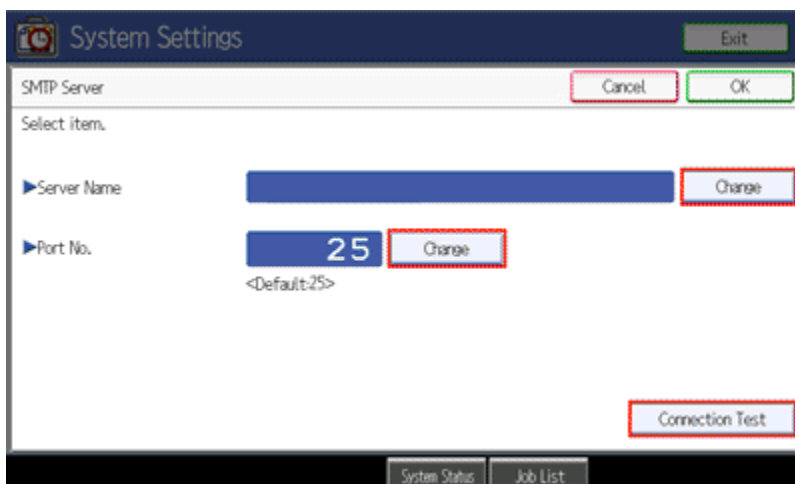
3. Configure various settings as necessary.

[--] Configuring SMTP server

1. Press **[File Transfer]**, and then press **[SMTP Server]**.



2. Press **[Change]**, and then input Server Name and Port Number.
 - Server name can be input as server name (FQDN) or IP address. If you input the server name as an IP address, be sure to set the DNS configuration as shown below.
 - Press **[Connection Test]** to check if communications succeed.



[↑ To Top](#)

[-] Configuring SMTP Authentication

To configure Scan to E-mail SMTP Authentication from your operation panel, follow these steps:

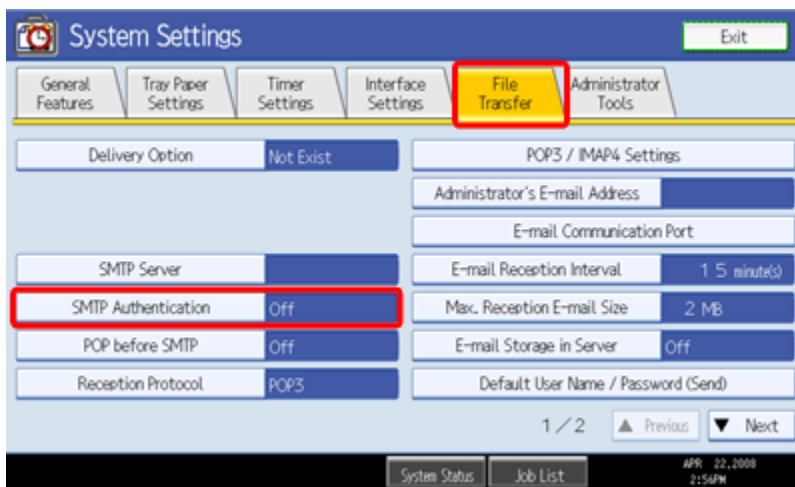
Note

- Screenshots are provided for reference purposes only. Your display may vary depending on your operating system and device.)
- In addition to SMTP Authentication settings, you will also need to have correctly configured Scan to E-mail settings.

The following values will be used in the registration process:

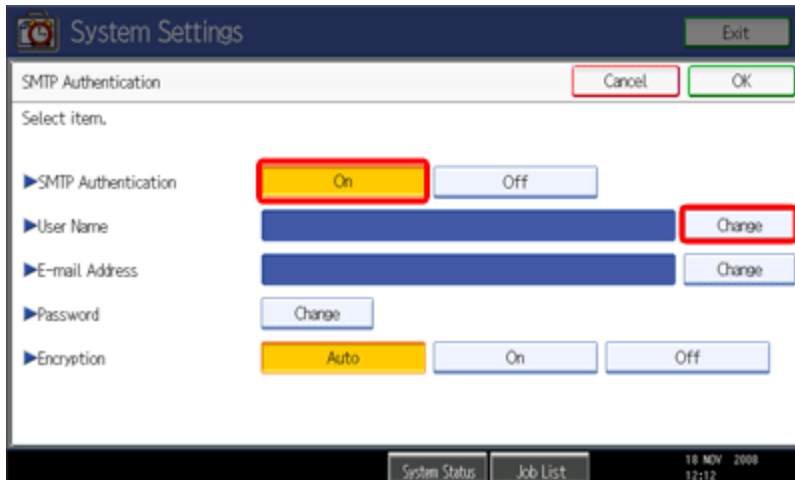
- IPv4 Address of your device
192.168.1.100
- SMTP Authentication User E-mail Address
imagio@example.co.jp
- SMTP Authentication User Name
imagio

1. Press the **[File Transfer]** tab, and then press **[SMTP Authentication]**.

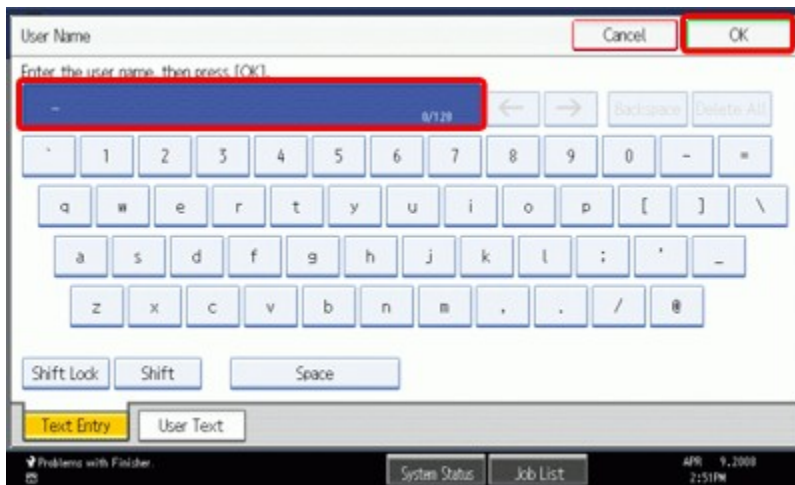


2. Press **[On]**.

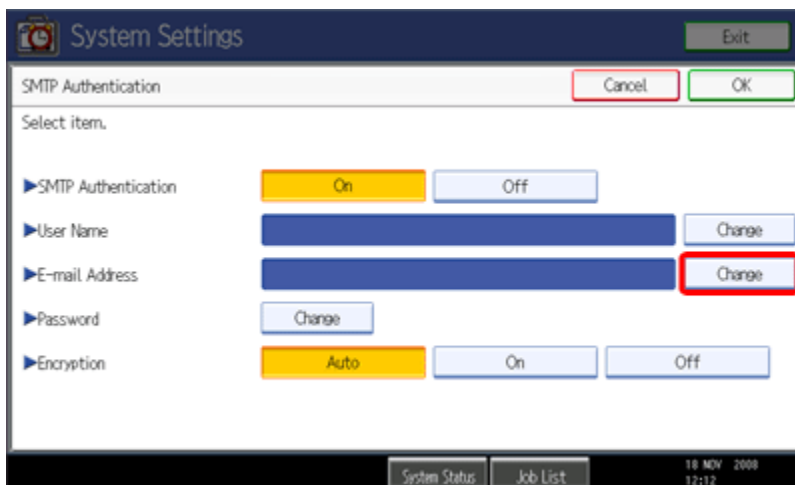
Press **[Change]** next to **[User Name]**.



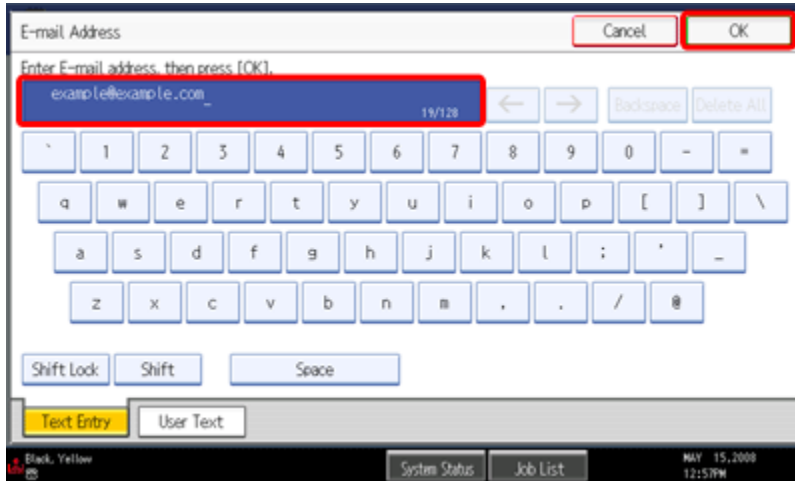
3. Enter the user name to use for SMTP Authentication, and then press [OK].



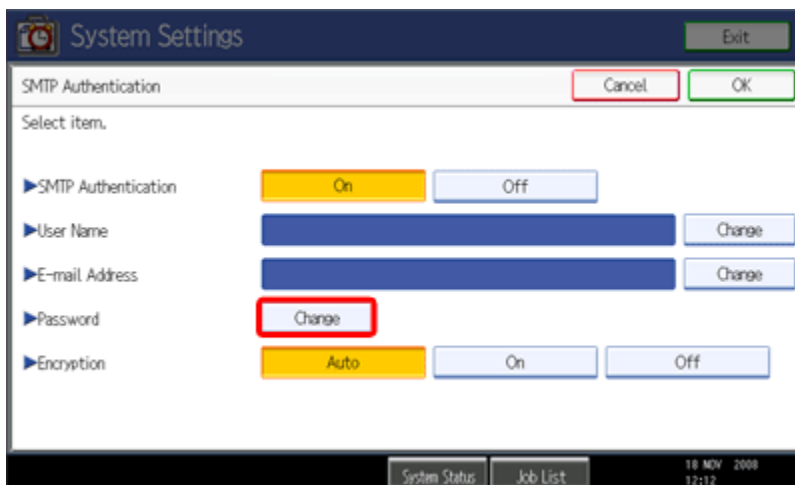
4. Press [Change] next to [E-mail Address].



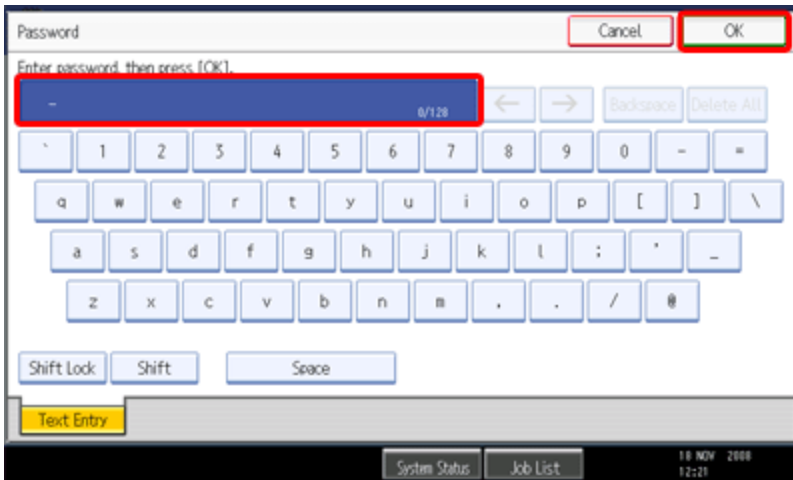
5. Enter the SMTP Authentication e-mail address, and then press **[OK]**.



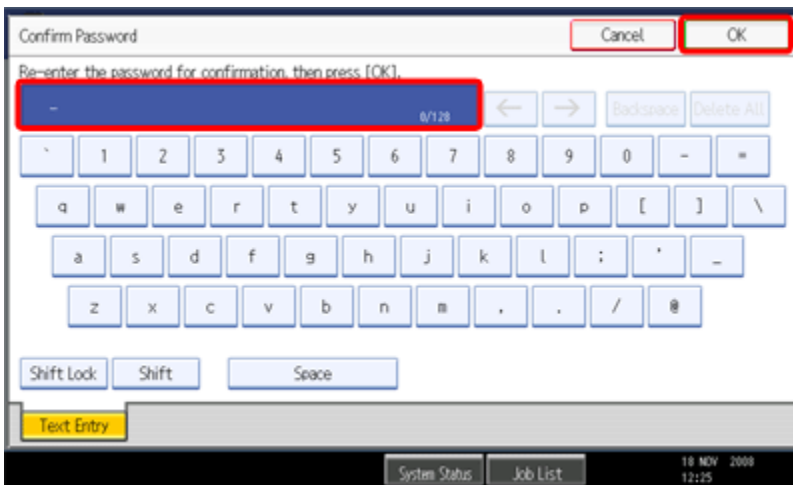
6. Press **[Change]** next to **[Password]**.



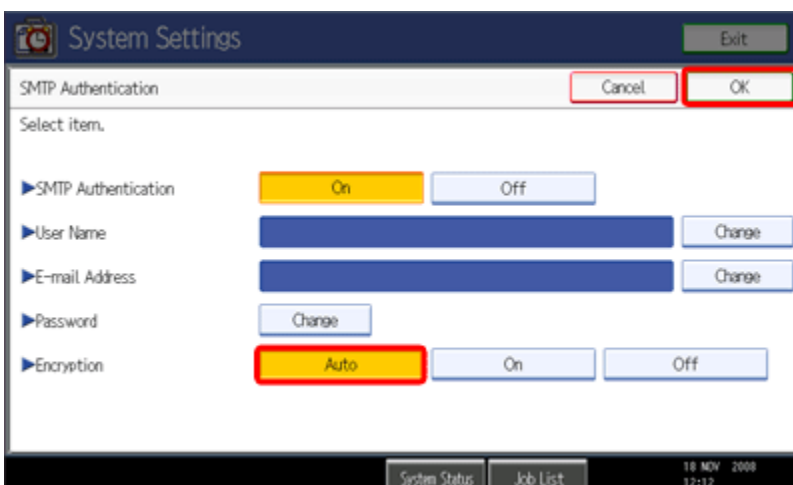
7. Enter the password to use for SMTP Authentication, and then press **[OK]**.



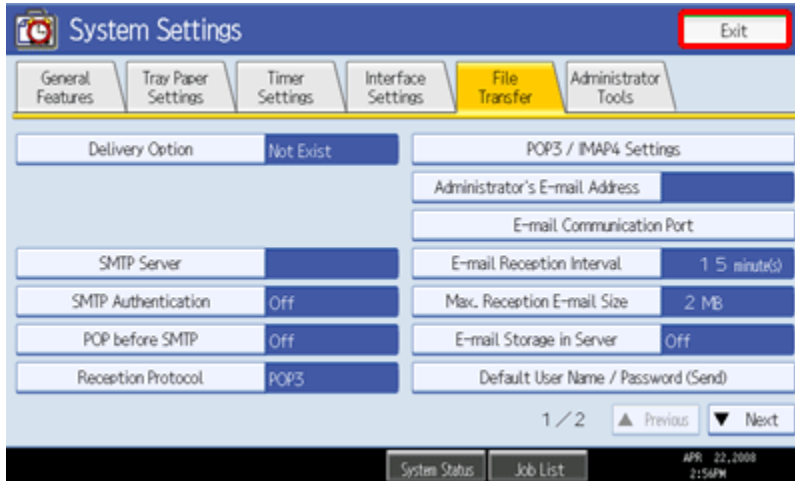
8. Enter your password again to confirm it, and then press [OK].



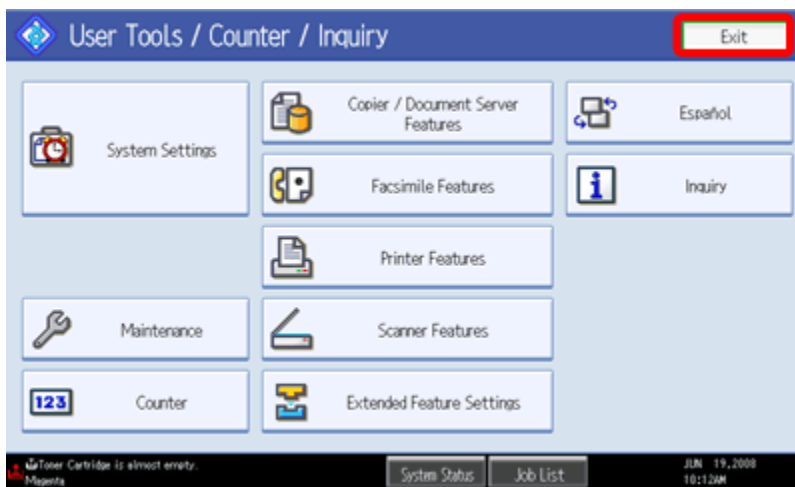
9. Press [Auto] in [Encryption], and then press [OK].



10. Press **[Exit]**.



11. Press **[Exit]**.



[↑ To Top](#)